



Oldbury Observer

In This Issue - 2nd Sept 2020



Oldbury Park Primary
RSA ACADEMY

Welcome to this very first edition of The Oldbury Observer!

We are hoping to make this a weekly or fortnightly eye on life at Oldbury Park RSA Academy. In this edition:

- ***Welcome Back!***
- ***Frequently Asked Questions***
- ***COVID-19 info for families***
- ***Contact Us***

Welcome Back to Oldbury!



Well, after almost 6 months since schools were asked to effectively close, we will be delighted to welcome the Oldbury Family back into school on Thursday. Thank you to all of the community for the supportive and helpful way in which you have worked with us since March, as we navigate our way carefully and sensitively back into full-time school life.

We will constantly be reviewing and evaluating our procedures and plans, in line with our Risk Assessment. Please bear with us - this is a learning curve for everyone and we will not get everything right straight away. However, we will do everything with everyone's safety as the driving factor for decision making.

We hope that you have all seen the introductory video now and that it helped you and your children to feel ready for school life. If you haven't seen it yet - look here: [Welcome Back Video](#)

As we go forward, we will look to communicate with all of you as much as possible as we recognise that, in these still challenging and uncertain times, it is that flow of information between home and school that helps us feel connected and safe. We will largely use the Teachers2Parents text messaging system for instant messaging, collating information through surveys or sending out links to documents for your information. Therefore, please make sure that the details we have on file for you - in terms of a mobile number - are up to date. You can contact the school office on the number at the end of this newsletter.

Frequently Asked Questions...



What is the situation with Aspens and the menu on offer?

You will notice that we are only having a reduced menu to begin with in September. You can choose from either a baguette / sandwich packed lunch option or a jacket potato with a choice of fillings for your child.

This is because we are having to stagger lunchtimes for the children to keep them safe in their bubble groups. In order to do this, we are hoping to reduce the amount of time that the children will spend in the dining room and avoid the children having to queue for food. After each bubble group has finished, the tables and chairs will be cleaned before the next bubble group arrive.

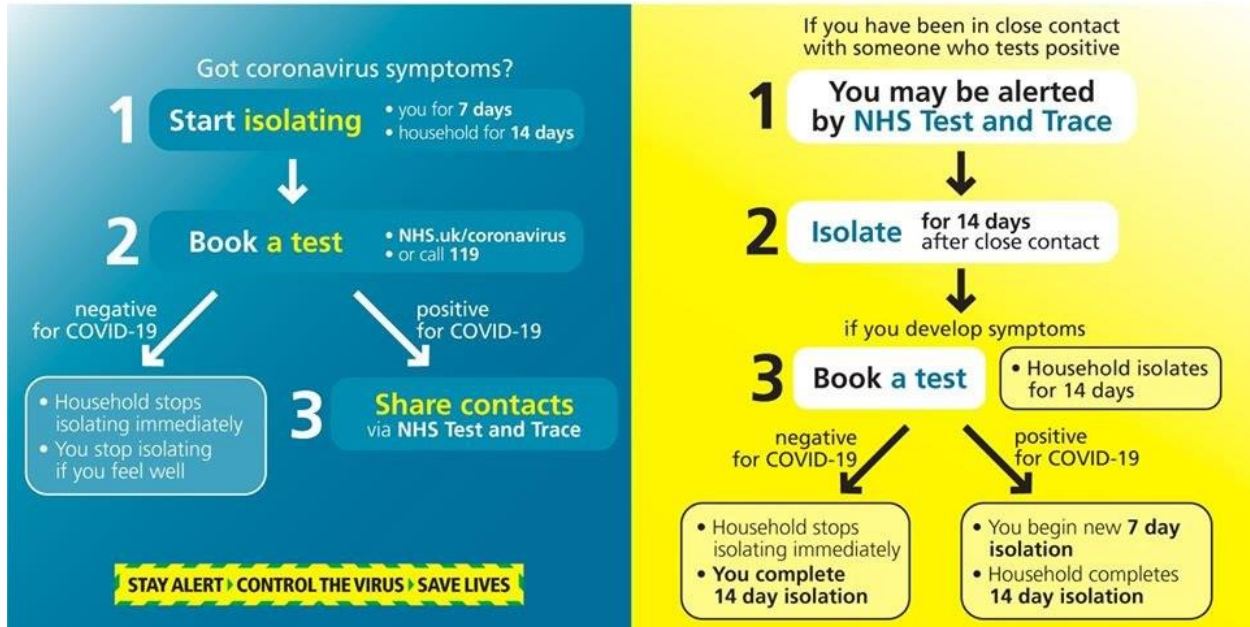
Please be reassured that as soon as we can have a system up and running that works for all the bubble groups and the children are moving around safely, we will extend the menu choices. We hope that this will be in a very short time! Thank you for your understanding in keeping everyone safe. Aspens are currently looking to update pupil names and classes on their web page. **What can we do if we have children with different drop-off times?** We recognise that in our opening set up there will be some families who need to make 'double drops' at different times. As we stated above, bear with us on this for now. We may be able to find better, more streamlined processes once we have established a strong and safe start to life at Oldbury in Autumn 2020. There will be members of staff out on the playground and around the site and we will seek to support, advise and guide throughout these opening days and weeks. **Can we still drive in and drop for Wraparound Care (Victoria House) Access?** Yes - as the drop offs and pick ups are outside of school time, this is fine. **Can individuals with Disabled Access badges still drive into the school grounds?** Yes, please ensure that your blue badge is on display and you will

need to call the school office number displayed on the gate to be permitted access. **What is happening for children with prescribed medication?** The process for these pupils remains the same in that medication should come to the school office and a form for any new medication still needs to be completed. We will place pupil medication in, or near to, their Bubble rather than hold them centrally in the office for ease and speed of access. **What is happening with fruit and milk deliveries to school for children?** We know that fruit will be delivered into school again from Tuesday 8th September for Reception and Key Stage 1 pupils. We don't yet know about milk deliveries into school but will be in touch with details once we do. **What will happen to any belongings left in school from last academic year?** We will do our very best to send named items home with pupils over the course of the first week back in school. In order to ensure we enact our Risk Assessment properly, we won't hold any 'Lost Property' offerings at this time. **Is the school still using the same hand wash as before the summer holidays?** No - as we recognise that children and adults will be washing their hands frequently, we have now purchased a new soap which contains a moisturiser.

COVID-19 Information for families...



It's important that, in order to keep everyone safe, you are aware of what to do in respect of COVID-19 symptoms being present. The Track & Trace flowchart, below, is the clearest representation we have found on exactly what to do:



Specific Information regarding COVID-19 at Oldbury Park...

Any pupil who displays symptoms of COVID-19 should not be brought to school; Anyone pupil who displays symptoms of coronavirus (COVID-19) will be cared for in school and a parent immediately called to collect - they then should get a test. Tests can be booked online through the NHS testing and tracing for coronavirus website or ordered by telephone via NHS 119 for those without access to the internet; If the pupil tests negative, if they feel well and no longer have symptoms similar to coronavirus (COVID-19), they can stop self-isolating. They could still have another virus, such as a cold or flu – in which case it is still best to avoid contact with other people until they are better. Other members of their household can stop self-isolating. The school will request evidence of a negative test result. If a pupil tests positive, they should follow the ‘stay at home: guidance for households with possible or confirmed coronavirus (COVID-19) infection’ and must continue to self-isolate for at least 7 days (updated guidance is 10 days) from the onset of their symptoms and then return to school only if they do not have symptoms other than cough or loss of sense of smell/taste. This is because a cough or anosmia can last for several weeks once the infection has gone. The 10-day period starts from the day when they first became ill. If they still have a high temperature, they should keep self-isolating until their temperature returns to normal. Other members of their household should continue self-isolating for the full 14 days.

Contact Us



If you wish to get in touch with the school, please use the following details:

Oldbury Park RSA Academy

Oldbury Road Worcester WR2 6AA

01905 424878

office@oldburypark.worcs.sch.uk <http://www.oldburypark.worcs.sch.uk/>